



ATF

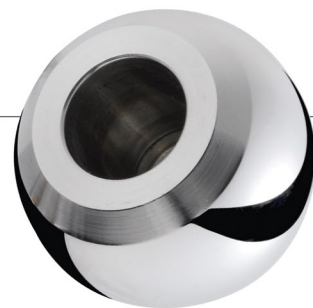
The Hip Specialist



**CONCEPT
VALMER**



ATF-Ti-052416-



CONCEPT VALMER

Tige

Tige anatomique sans ciment: Titane TA6V

Tige anatomique cimentée: Inox 316L

11 tailles droites et gauches

Col tulipé

Antéversion de 10°

Angle cervico-diaphysaire de 132°

Cône morse 10/12 angle 6°

Zone métaphysaire

Double héli-torsion inversée

Revêtement Titane poreux 300µ + Hap 100µ

Stabilité parfaite en rotation

Zone diaphysaire

Courbure antérieure anatomique

Diamètre adapté pour éviter tout conflit cortical





ATF

The Hip Specialist

Stem

*Cementless anatomical stem: Titanium TA6V
Cemented anatomical stem: Stainless steel 316L
11 sizes right and left*

Anatomically designed neck

*Anteversión: 10°
Neck-shaft angle: 132°
10/12 morse taper: 6°*

Methaphyseal area

*Built-in double inverted helix
Porous Titanium 300µ and Hap 100µ coating
Optimal rotational stability*

Diaphyseal area

*Anatomic anterior curvature
Adapted Diameter to avoid distal jamming*



ANCILLAIRE / ANCILLARY

INSTRUMENTS	REFERENCES	INSTRUMENTS
MANCHE PORTE RAPE DROIT	01011000	BROACH HANDLE
EXTRACTEUR UNIVERSEL	10010000	STEM EXTRACTOR
RAPES VALMER DROITE T1 à T10	03010101 - 10	RIGHT BROACH VALMER SIZE 1 to 10
RAPES VALMER GAUCHE T1 à T10	03010201 - 10	LEFT BROACH VALMER SIZE 1 to 10
ALESOIR RIGIDE Ø10-Ø14mm	01090010 - 14	REAMER Ø10 to Ø14 mm
CISEAU VALMER	01080000	BOX CHISEL
IMPACTEUR DE TETE	01040000	FEMORAL HEAD IMPACTOR
IMPACTEUR DE TIGE	01050000	STEM INSERTER
TETE D'ESSAI Ø22 COL MOYEN	01072200	TRIAL HEAD Ø22 STD NECK
TETE D'ESSAI Ø22 COL LONG	01072240	TRIAL HEAD Ø22 LONG NECK
TETE D'ESSAI Ø22 COL XL	01072280	TRIAL HEAD Ø22 X-LONG NECK
TETE D'ESSAI Ø28 COL COURT	01072804	TRIAL HEAD Ø28 SHORT NECK
TETE D'ESSAI Ø28 COL MOYEN	01072800	TRIAL HEAD Ø28 STD NECK
TETE D'ESSAI Ø28 COL LONG	01072840	TRIAL HEAD Ø28 LONG NECK
TETE D'ESSAI Ø28 COL XL	01072880	TRIAL HEAD Ø28 X-LONG NECK
TETE D'ESSAI Ø32 COL COURT	01073204	TRIAL HEAD Ø32 SHORT NECK
TETE D'ESSAI Ø32 COL MOYEN	01073200	TRIAL HEAD Ø32 STD NECK
TETE D'ESSAI Ø32 COL LONG	01073240	TRIAL HEAD Ø32 LONG NECK
TETE D'ESSAI Ø36 COL COURT	01073604	TRIAL HEAD Ø36 SHORT NECK
TETE D'ESSAI Ø36 COL MOYEN	01073600	TRIAL HEAD Ø36 STD NECK
TETE D'ESSAI Ø36 COL LONG	01073640	TRIAL HEAD Ø36 LONG NECK
TETE D'ESSAI Ø36 COL XL	01073680	TRIAL HEAD Ø36 X-LONG NECK

IMPLANTS / IMPLANTS

TIGES	REFERENCES	STEM
VALMER AC T1 À T10 DROITE	0100101 - 10	CEMENTED VALMER SIZE 1 to 10 RIGHT
VALMER AC T1 À T10 GAUCHE	0100201 - 10	CEMENTED VALMER SIZE 1 to 10 LEFT
VALMER SC T1 À T11 DROITE	03000101 - 11	CEMENTLESS VALMER SIZE 1 to 11 RIGHT
VALMER SC T1 À T11 GAUCHE	03000201 - 11	CEMENTLESS VALMER SIZE 1 to 11 LEFT
TETES ALUMINE		ALUMINA BALLHEADS
TETE ALUMINE 28 CC	01412804	ALUMINA BALLHEADS 28 CC
TETE ALUMINE 28 CM	01412800	ALUMINA BALLHEADS 28 CM
TETE ALUMINE 28 CL	01412840	ALUMINA BALLHEADS 28 CL
TETE ALUMINE 32 CC	01413204	ALUMINA BALLHEADS 32 CC
TETE ALUMINE 32 CM	01413200	ALUMINA BALLHEADS 32 CM
TETE ALUMINE 32 CL	01413240	ALUMINA BALLHEADS 32 CL
TETES INOX		STAINLESS STEEL BALLHEADS
TETE INOX M30 22 CM	01422200	STAINLESS STEEL BALLHEADS M30 22CM
TETE INOX M30 22 CL	01422240	STAINLESS STEEL BALLHEADS M30 22CL
TETE INOX M30 22 CXL	01422280	STAINLESS STEEL BALLHEADS M30 22CXL
TETE INOX M30 28 CC	01422804	STAINLESS STEEL BALLHEADS M30 28CC
TETE INOX M30 28 CM	01422800	STAINLESS STEEL BALLHEADS M30 28CM
TETE INOX M30 28 CL	01422840	STAINLESS STEEL BALLHEADS M30 28CL
TETE INOX M30 28 CXL	01422880	STAINLESS STEEL BALLHEADS M30 28CXL
TETE INOX M30 28 CR	01422812	STAINLESS STEEL BALLHEADS M30 28CR
TETES DELTA		DELTA BALLHEADS
TETE BIOLOX® DELTA 32 CC	01443204	BIOLOX® DELTA BALLHEAD 32 CC
TETE BIOLOX® DELTA 32 CM	01443200	BIOLOX® DELTA BALLHEAD 32 CM
TETE BIOLOX® DELTA 32 CL	01443240	BIOLOX® DELTA BALLHEAD 32 CL
TETE BIOLOX® DELTA 36 CC	01443604	BIOLOX® DELTA BALLHEAD 36 CC
TETE BIOLOX® DELTA 36 CM	01443600	BIOLOX® DELTA BALLHEAD 36 CM
TETE BIOLOX® DELTA 36 CL	01443640	BIOLOX® DELTA BALLHEAD 36 CL
TETE BIOLOX® DELTA 36 CXL	01443680	BIOLOX® DELTA BALLHEAD 36 CXL



191, RUE DES MÉTAUX
74970 MARIGNIER
FRANCE

TÉL. (33) 4 50 34 57 10
FAX. (33) 4 50 89 21 20

E-MAIL
infos@atf-implants.com

SITE WEB
www.atf-implants.com

